

April 21-27, 2026

**BUILD A BETTER
BURGER
SALE**



LETTUCE
cello pac

99¢
ea.

GROUND BEEF
80% lean
family pack
single pack \$5.79 lb.



\$4.79
lb.



HASS AVOCADOS
5 count bag

\$1.99

CHICKEN BREAST
boneless family pack
previously frozen



\$1.99
lb.



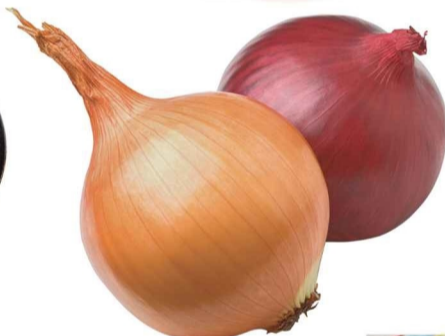
LARGE PINK LADY APPLES

99¢
lb.

BEEF TOP SIRLOIN STEAK
preferred trim boneless
family pack
single pack \$9.99 lb.



\$8.99
lb.



JUMBO SWEET VIDALIA OR TEXAS 1015 YELLOW ONION OR RED SWEET ITALIAN ONIONS

89¢
lb.



FOOD CLUB JUMBO HAMBURGER BUNS
8 pk. 4.5 inch

\$1.79



KRAFT AMERICAN SINGLES
select varieties
16 oz.

\$3.99



HELUVA GOOD! PARTY DIPS
select varieties
12 oz.

2/\$4



CHECKERS/RALLY'S, ARBY'S, SONIC OR PAW PATROL FRIES OR TOTS
select varieties
22-28 oz.

2/\$8



HEINZ KETCHUP
20 oz.

\$3.49



KRAFT BARBECUE SAUCE
select varieties
18 oz.

2/\$3



FOOD CLUB POTATO CHIPS
select varieties
10 oz.
pre price 2 for \$6

2/\$4



FOOD CLUB OR PANHANDLE PURE DRINKING WATER
24/16.9 oz.

2/\$6



CHARKING CHARCOAL OR WOOD PELLETS
select varieties
15.4 lb. charcoal
20 lb. pellets

\$5.99

Produce Specials



SQUASH
zucchini, yellow or
mexican

\$1.29
lb.



LEAF LETTUCE
red, green or romaine

2/\$3
for



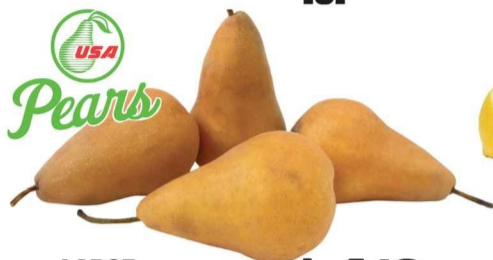
SPINACH BUNCH

\$1.69
ea.



GARLIC BULBS
5 count

\$1.99



LARGE BOSC PEARS

\$1.19
lb.



FANCY LEMONS OR LIMES

3/\$1
for



BROCCOLI
garden fresh

\$1.99
lb.

BASKET & BUSHEL PORTABELLA CAP MUSHROOMS
6 oz.

\$3.79



LARGE GREEN BELL PEPPERS OR HOTHOUSE BELL PEPPERS
red, yellow or orange

2/\$3
for



BASKET & BUSHEL RED POTATOES
3 lb. bag

\$1.99
ca.



EXTRA LARGE GRAPES
red or black seedless
or red globe seeded

\$2.99
lb.



BLACKBERRIES, BLUEBERRIES, OR RASPBERRIES
6 oz.

2/\$6
for

Dairy and Frozen Specials



DAISY SOUR CREAM
14 oz. squeeze
original or light

\$2.49



JUST CRACK AN EGG
3 oz.
all american or denver

\$1.99



PHILADELPHIA CREAM CHEESE SOFT SPREAD
select varieties 7.5-8 oz.

2/\$8



DAVID'S DELI PROTEIN BAGELS
select varieties
5 count

\$3.99



RANA PASTA OR PASTA SAUCE
select varieties
7-15 oz.

2/\$8



CHALLENGE BUTTER WHIPPED BUTTER
8 oz.

\$2.99



MARIE CALLENDER'S PIES
select varieties
25-38 oz.

\$6.89



HEALTHY CHOICE, MARIE CALLENDER'S OR STUFFER'S BOWLS, STEAMERS OR ENTREES
select varieties 7.8-14.4 oz.

2/\$6



TOTINO'S PARTY PIZZAS
select varieties
9.8-10.9 oz.

2/\$4



HOT POCKETS
select varieties
4 count

\$4.99



PICTSWEET FARMS FROZEN VEGETABLES
select varieties 12-16 oz.

2/\$5



SEAPAK BATTERED COD OR SHRIMP
9-14 oz.
jumbo or popcorn shrimp

\$7.49



DORITOS
select varieties
9-9.25 oz.
pre price \$5.49

2/\$7



KRAFT
SHREDDED OR
CHUNK CHEESE
select varieties
8 oz. pre price \$3.79-\$4.19

2/\$5



BLUE BUNNY
ICE CREAM
NOVELITES
select varieties
4-9 count

2/\$8



KELLOGG'S
CEREAL
select varieties
12-25 oz.

\$4.99



KRAFT
MAC & CHEESE
DINNER
7.25 oz.

99¢



FIORA
BATH TISSUE OR
PAPER TOWELS
select varieties
2-4 rolls

\$2.99



KRAFT
REAL MAYO
select varieties
22-30 oz.

\$3.99



LIBBY'S
CANNED FRUIT
select varieties
15-15.25 oz.

2/\$5



GREEN GIANT
CANNED
VEGETABLES
select varieties
11-15.25 oz.

2/\$3



MARUCHAN
INSTANT
LUNCH
select varieties
2.25 oz.

3/\$2



WOLF BRAND
HOT DOG SAUCE
14 oz.

2/\$3



HATCH
GREEN CHILE
select varieties
4 oz.

2/\$3



EURO CLASSIC
BRIOCHE BUNS
select varieties
7.05 oz.

\$3.99



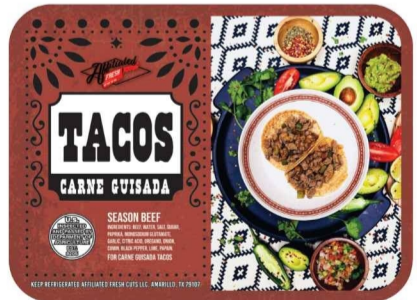
TREAT SHOP
CAKE SQUARES
select varieties
5.8-6.5 oz.

\$3.29



CINNAROLL
CINNAMON ROLLS
select varieties
18.8-22.2 oz.

\$7.99



FRESH CUTS
MARINATED BEEF
TACO MEAT

\$9.99
lb.



LA COCINERA
CUT PORK
FEET
2 lb.

\$6.49



FOOD CLUB
SPLIT TOP
HONEY WHEAT
BREAD
24 oz.

\$1.69



PLAINS DAIRY
MILK
6 pack 10 oz.
whole plain, chocolate
or strawberry

\$4.99



PLAINS
HAPPY ORANGE
64 oz.

\$2.49

Meat Specials



SIRLOIN CUT PORK CHOPS
preferred trim boneless
family pack
small pack \$2.99 lb.

\$249
lb.



AF BRANDED BEEF 100% BEEF PATTIES
2 lb. 8-1/4 lb. patties
75% lean

\$899



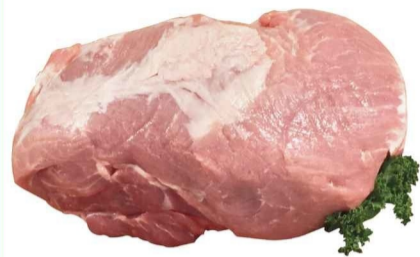
CHUCK TENDER ROAST OR STEAK
preferred trim

\$699
lb.



SUGARDALE SMOKED BACON
hickory or applewood
12 oz.

2/\$7



PORK SIRLOIN ROAST
preferred trim boneless

\$219
lb.



BOB EVANS MASHED POTATOES OR MAC & CHEESE
28-32 oz. family size

\$499



SUGARDALE HOT DOGS
12 oz.

4/\$5



LEDBETTER BEEF TENDERLOIN FILET
6 oz.
bacon wrapped

\$599



PEYTON'S CHORIZO LINKS
8 oz.
beef or pork

2/\$7



COUNTRY BOYS SMOKED SAUSAGE
select varieties 12 oz.

\$399



CACIQUE SALSA
select varieties
14-16 oz.

2/\$6



TEXAS CHILI COMPANY QUESO + BEEF CHILI
14 oz.

\$449



GRILLO'S DILL CHIPS
16 oz.

\$449



ECKRICH MEAT BOLOGNA OR COTTO SALAMI
12-16 oz.

\$319



FARMLAND SLICED STACK PACK BACON
applewood or hickory 24 oz.
thick sliced

\$999



PRIME FRESH HAM OR TURKEY LUNCH MEAT
select varieties
7-8 oz.

\$499



SMITHFIELD ANYTIME HICKORY SMOKED PORK CHOPS
17 oz.
bone in

\$799



OVEN GRILLERS JALAPENO POPPERS
9 oz.

\$599



MARC ANGELO SKEWERS
select varieties
11.28 oz.

\$599



NATHAN'S FAMOUS PRETZEL DOGS
16 oz.

\$799



FARMLAND SAUSAGE
8 oz. links
12 oz. roll

2/\$6



OLE CORN TORTILLAS
72 count

\$399



PLAINS DAIRY MILK
6 pack 10 oz.
whole plain,
chocolate or
strawberry

\$499



KELLOGG'S CEREAL
select varieties
12-25 oz.

\$499



MARIE CALLENDER'S PIES
select varieties
25-38 oz.

\$689



CINNAROLL CINNAMON ROLLS
18.8-22.2 oz.

\$799



BLUE BUNNY ICE CREAM NOVELITES
select varieties
4-9 count

2/\$8



TOTINO'S PARTY PIZZAS
select varieties
9.8-10.9 oz.

2/\$4