

PRIVATE LABEL
Brands

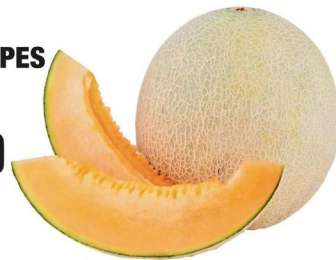


FRYER WINGS
family pack
previously frozen

\$1.99
lb.

CANTALOUPE

\$1.99
ea.



STRAWBERRIES
1 lb.

\$1.99
ea.



BEEF TOP ROUND ROAST "LONDON BROIL"
boneless
preferred trim

\$5.99
lb.

LARGE WHITE ONIONS

2/\$1
lbs.



PORK BABY BACK RIBS
previously frozen

\$2.99
lb.

JUMBO HASS AVOCADOS

99¢
ea.



FOOD CLUB LOW FAT YOGURT
select varieties
6 oz.

4/\$2



CRAV'N FLAVOR THIN CRUST PIZZA
select varieties
19-23.45 oz.

\$3.99



FOOD CLUB BARBECUE SAUCE
select varieties
18 oz.

99¢



FOOD CLUB CEREAL
select varieties
28-32 oz.

\$3.99



FOOD CLUB PEANUT BUTTER
16 oz.
creamy or crunchy

2/\$3



FOOD CLUB JELLY
20 oz.
squeeze bottle
grape or strawberry

2/\$3



GAME PLAN SPORTS DRINK
select varieties 8 pk.

2/\$8

3 DAY SALE!

APRIL 17-19, 2026
FRIDAY, SATURDAY & SUNDAY



PANHANDLE PURE TEA, LEMONADE OR LIMEADE
select varieties
gallon

3 DAY SALE!

\$2.00



FOOD CLUB JUMBO BISCUITS
select varieties
8 ct.

\$1.00



FOOD CLUB BUTTER QUARTERS
16 oz.
salted or unsalted

2/\$4



CRAV'N FLAVOR ICE CREAM OR SHERBET
select varieties
48 oz.

2/\$4



FOOD CLUB CEREAL
select varieties
11.5-13.5 oz.

4/\$5



FOOD CLUB OR PANHANDLE PURE DRINKING WATER
32 pack 16.9 oz. bottles

2/\$6

3 DAY SALE!

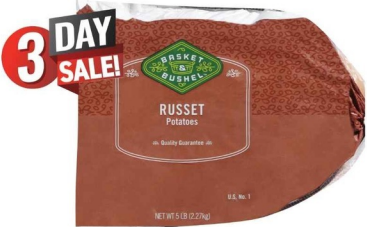
APRIL 17-19, 2026
FRIDAY, SATURDAY & SUNDAY



**PERI & SONS FARMS
SWEET YELLOW
ONIONS**
3 lb. bag **99¢** ea.



**EXTRA LARGE
SEEDLESS
RED GRAPES**
\$179 lb.



**BASKET & BUSHEL
RUSSET POTATOES**
5 lb. bag us #1 **\$100** ca.



**FRYER
THIGHS OR
DRUMSTICKS**
family pack
previously frozen
69¢ lb.



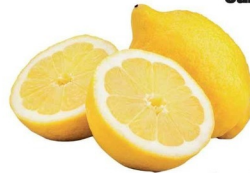
**PORK QUARTER
LOIN CHOPS**
center cut pork
loin chops \$1.99 lb.
\$159 lb.



**ECKRICH
SMOKED SAUSAGE
OR SMOKY LINKS**
select varieties
8.3-14 oz. **\$179**



BROWN COCONUT **\$199** ea.



FANCY LEMONS
juicy **3/\$1** for



DOLE SALAD KITS
select varieties
7.1-10.3 oz. **\$299** ea.



SPINACH BUNCH **\$149** ea.



**COSMIC CRISP
APPLES** **\$199** lb.



TOMATILLOS **\$219** lb.



**SMALL RED
GRAPEFRUIT** **99¢** ea.



SWEET POTATOES
u.s. no. 1 **\$129** lb.



**LARGE GREEN
PEARS** **\$129** lb.



**GREEN ONION
BULBS BUNCH** **99¢** ea.



**EXTRA LARGE
ORANGES** **99¢** lb.



BUTTER LETTUCE **\$149** ea.

Dairy and Frozen Specials



**FOOD CLUB
HEAVY
WHIPPING CREAM**
32 oz. **\$449**



**FOOD CLUB
COTTAGE CHEESE**
24 oz. small or large curd **2/\$6**



**FOOD CLUB
PARTY DIPS**
select varieties
12 oz. **\$189**



**WIDE AWAKE
COFFEE CREAMER**
select varieties
32 oz. **\$249**



**FOOD CLUB
CHEESE
SINGLES**
12 oz. **\$199**



**FOOD CLUB
AMERICAN STYLE
LOAF**
32 oz. pre price \$6.99 **\$499**



**FOOD CLUB
FROZEN FRUIT**
select varieties
12 oz. **\$249**



**FOOD CLUB
GARLIC TEXAS
TOAST OR
BREADSTICKS**
10.5-11.25 oz. **\$249**



**CRAV'N FLAVOR
BREAKFAST
SANDICHES**
select varieties
4 count **\$549**



**CRAV'N FLAVOR
LASAGNA OR PASTA
BAKE CHICKEN WITH
CHICKEN & BROCCOLI**
select varieties 36-38 oz. **\$749**



**CRAV'N FLAVOR
SKILLET DINNER**
select varieties
21 oz. **2/\$9**



**CRAV'N FLAVOR
APPETIZERS**
select varieties
7-8 oz. **2/\$5**





FOOD CLUB SHREDDED OR CHUNK CHEESE
select varieties
6-8 oz.

\$1.99



FOOD CLUB VEGETABLE OIL
40 oz.

\$1.99



FOOD CLUB SALAD DRESSING
select varieties
16 oz.

\$1.99



CRAV'N FLAVOR KETTLE COOKED POTATO CHIPS
select varieties
8 oz.

2/\$4



SIMPLY DONE BATH TISSUE
12 mega rolls
soft or strong

\$9.99



CHARKING HARDWOOD PELLETS
select varieties
20 lb.

\$5.99



SWEET P'S BROWNIES
select varieties
13 oz.

\$3.99



FOOD CLUB SANDWICH WHITE BREAD
24 oz.

\$1.39



FOOD CLUB CANNED PINEAPPLE OR MANDARIN ORANGES
select pineapple
15-20 oz.

2/\$3



FOOD CLUB CANNED TOMATOES
select varieties
14.5-15 oz.

89¢



THAT'S SMART! BLEACH
64 oz.

\$1.19



FOOD CLUB SKILLET CLASSICS
select varieties
5.6-6.4 oz.

5/\$5



FULL CIRCLE MARKET ARTISAN BREAD
select varieties
12-14 oz.

\$3.49



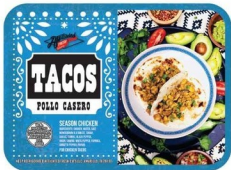
SWEET P'S ANGEL FOOD CAKES
select varieties
7-11 oz.

\$3.49



SWEET P'S JUMBO VARIETY DONUTS
12 count

\$7.99



FRESH CUTS CHICKEN TACO MEAT

\$3.99 lb.



"Our Brands"



LA COCINERA PORK NECK BONES
2 lb.

\$4.49



TENDERCRUST HAWAIIAN JUMBO BUNS
8 pack

\$3.49



FOOD CLUB BUTTERMILK
half gallon

\$2.99



FOOD CLUB ORANGE JUICE
gallon
original or with calcium

\$6.99

Meat Specials

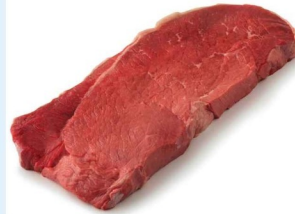
**FOOD CLUB
CHICKEN BREAST OR
BREAST TENDERLOINS**
2.5 lb. bag
boneless skinless iqt

\$6⁹⁹



WHOLE PORK LOINS
boneless
family pack pork loin chops
boneless \$2.99 lb.

**\$2⁹⁹
lb.**



**BEEF TOP ROUND
STEAK**
preferred trim
boneless

**\$6²⁹
lb.**



**FOOD CLUB
SLICED BACON**
16 oz.
original or thick

\$4⁹⁹

**FOOD CLUB
100% BEEF
BURGERS**
2 lb.
onion or
jalapeno cheddar

\$11⁹⁹



**SWAGGERTY'S FARM
ALL NATURAL
SAUSAGE**
1 lb. roll
mild or hot

\$3⁹⁹



**FOOD CLUB
CHICKEN PATTIES
OR NUGGETS**
32 oz.
fully cooked

\$5⁴⁹



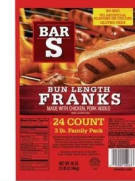
**FOOD CLUB
MASHED POTATOES
OR MAC & CHEESE**
20-24 oz.

\$3⁹⁹



**BAR S
BUN LENGTH
MEAT FRANKS**
3 lb.

\$6⁹⁹



**CONECUH
SMOKED
SAUSAGE**
select varieties
16 oz.

\$5⁹⁹



**SOULES KITCHEN
FAJITA CHICKEN**
16 oz.
fresh or frozen

\$8⁹⁹



**BAR S
MEAT FRANKS**
select varieties
1 lb. jumbo jumbos,
chicken or
bun length

2/\$5



**BAR S
COTTO SALAMI
OR BOLOGNA**
select bologna
1 lb.

\$2⁹⁹



**BAR S
SMOKED
HAM OR
TURKEY**
1.5-1.75 lb.

\$7⁹⁹



**BAR S
SMOKED
SAUSAGE**
select varieties
2.5 lb. family pack

\$8⁴⁹



**BAR S
HOT LINKS**
42-48 oz. family pack
classic or hot honey

\$11⁹⁹



**BAR S
BOLOGNA**
5lb. chub

\$13⁹⁹



**BAR S
BEEF CORN
DOGS**
1.5 lb.

\$7⁹⁹



**FOOD CLUB
100% BEEF
BURGERS**
2 lb. box
angus, bacon cheddar
or smash

\$14⁹⁹



**SOULES KITCHEN
BEEF FAJITA
STRIPS**
12 oz.

\$12⁹⁹



**DELIMEX
TAQUITOS**
20 oz.
beef or chicken

\$5⁹⁹



**SWAGGERTY'S FARM
BREAKFAST
SANDWICHES**
4-12 count
sausage, chicken or
waffle sausage

\$7⁴⁹



**FOOD CLUB
CEREAL**
select varieties
28-32 oz.

\$3⁹⁹



**FOOD CLUB
SHREDDED OR
CHUNK CHEESE**
select varieties
6-8 oz.

\$1⁹⁹



**FOOD CLUB
SALAD
DRESSING**
select varieties
16 oz.

\$1⁹⁹



**CRAV'N FLAVOR
KETTLE
COOKED
POTATO CHIPS**
select varieties
8 oz.

2/\$4



**FOOD CLUB
SKILLET
CLASSICS**
select varieties
5.6-6.4 oz.

5/\$5



**FOOD CLUB
COTTAGE
CHEESE**
24 oz.
small or large curd

2/\$6