

# Big Savings you'll love!



**7.99**

16 oz./26-30 ct.  
Our Family Raw Shrimp



**5.99** lb.

AngusPride USDA Choice  
Boneless Beef  
Bottom Sirloin  
Steak



**2.99** lb.

Jumbo  
Red  
Cherries



**5.99**

21.6-40 oz. Select Frozen  
Dolly Parson Desserts or  
Marie Callender's  
Fruit or Cream  
Pies



**3/\$5**

8 oz. Box  
Select Varieties  
Our Family  
Cream Cheese



**2.59** lb.

Family Pack  
Wholesome, All Natural  
Boneless  
Pork Loin Chops



**6.99**

40 oz. Ind. Quick Frozen  
Tyson  
Boneless, Skinless  
Chicken Breasts



**3/\$10**

9.1-13.6 oz.  
Select Varieties  
Dole or Fresh Express  
Chopped Salad Kits



**10.49**

22.6 oz. Can  
Folgers  
Colombian  
Coffee

**9.49**

22.6-25.9 oz. Can  
Select Varieties  
Folgers  
Coffee  
Excludes Decaf



**3.99**

32 oz.  
Select Varieties  
Coffee mate  
Creamer or  
Cold Foam

Ad Items Good Wednesday, January 12 Through Tuesday, February 18, 2025

## Redfield FOOD CENTER

516 N. Main Street • Redfield, SD 57469  
Phone: 605-472-0424  
redfieldfoodcenter.com

**OPEN 7 DAYS A WEEK!**

Monday-Friday: 7:30 am - 7:00 pm  
Saturday: 7:30 am - 6:00 pm  
Sunday: 9:00 am - 5:00 pm

• We Cater  
• Lottery Tickets  
• Postage Stamps  
• Copies 20¢ Each



Gallon Milk Day **EVERY MONDAY**

Skim, 1% or 2% Milk **ON SALE**

**EVERY MONDAY** 3 Gallons For **\$100**  
Bulk Water

### MORE MEAT SPECIALS!

Bottom Round Roast ..... **5.49** lb.

Bottom Round Steak ..... **5.99** lb.

10 lb. Tube  
80% Lean Ground Beef ..... **3.99** lb.

Family Pack  
80% Lean Ground Beef ..... **4.49** lb.

# DAIRY



**2/\$5**

5.5-8 oz.  
Select Varieties  
**Crystal Farms**  
Shredded or  
Chunk Cheese



**3/\$4**

4.5-6.7 oz.  
Select Varieties  
**Chobani Flips,**  
Protein or  
Creations Yogurt



**2/\$5**

6-8 oz.  
Select Varieties  
**Our Family**  
Natural Cheese  
Slices



**4.29**

45 oz.  
**Blue Bonnet**  
Spread



**3.29**

2 ct.  
**Our Family**  
Pie Crusts



**2/\$4**

16 oz.  
**Our Family**  
Sour Cream or  
French Onion Dip



**3.39**

64 oz.  
Select Varieties  
**Almond Breeze**  
Almondmilk



16 oz.  
Select Varieties  
**Our Family**  
Cottage Cheese

**2.39**



16-16.5 oz.  
Select Varieties  
**Pillsbury**  
Cookie Dough

**2/\$7**

# FROZEN



**4/\$5**

10-12 oz. Onions,  
Peas, Corn, Mixed,  
Carrots, Cut Broccoli  
or Green Beans  
**Our Family**  
Vegetables



**2/\$6**

16-32 oz. Select  
**Our Family Fries,**  
Hash Browns,  
Tator Puffs or  
Onion Rings



**3/\$8**

11.7 oz.  
Select Varieties  
**Pillsbury**  
Toaster Strudel



**4.49**

24 ct.  
Select Varieties  
**Our Family**  
Waffles



**3.49**

12-16 oz.  
Select Varieties  
**Our Family**  
Fruit



**4.49**

48 oz.  
Select Varieties  
**Kemps**  
Simply Crafted  
Ice Cream



**1.79**

8 oz. Mini Loaf  
**Our Family**  
Garlic Bread



**2/\$5**

32 oz.  
Select Varieties  
**Our Family**  
Sherbet



**6.49**

20.5-29 oz. Select  
Chicken Patties, Nuggets  
or Country Fried Steak  
**Tyson**



**2/\$6**

9.25-10.3 oz.  
Select Varieties  
**Healthy Choice**  
Café Steamers



**2/\$6**

10-13 oz.  
Select Varieties  
**Marie Callender's**  
Bowls or Pot Pies

# FRESH MEAT



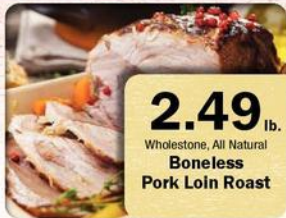
**13.99** lb.

AngusPride USDA Choice  
Boneless Beef  
Ribeye Steak



**5.99** lb.

AngusPride USDA Choice  
Boneless Beef  
Bottom Sirloin  
Roast



**2.49** lb.

Wholesale, All Natural  
Boneless  
Pork Loin Roast



**3.69** lb.

All Natural, Frozen  
Full or Half  
Rack  
Baby Back  
Pork Ribs



**6.99**

18.4-23 oz. Smithfield  
Marinated,  
Boneless Pork  
Tenderloins or  
Loin Fillets



**1.19** lb.

Gold'n Plump  
Grade A  
Whole  
Chicken



**5.99**

14-18 oz. Just Bare  
Boneless,  
Skinless  
Chicken Breasts  
or Tenderloins



**6.99**

12-16 oz.  
Select Varieties  
Hormel  
Black Label  
Sliced Bacon



**3.99**

12-14 oz.  
Johnsonville  
Brats, Breakfast  
Rope or Smoked  
Sausage



**4.99**

16 oz.  
Select Varieties  
Our Family  
Sliced Bacon



**3.99**

14-15 oz.  
Select Varieties  
Ball Park  
Beef Franks



**4.49**

6-8 oz.  
Select Varieties  
Hormel  
Natural Choice  
Sliced Meats



**2/\$5**

8 oz.  
Select Varieties  
Smithfield  
Ham Steak, Diced  
or Cubed Ham



**11.99**

19.5-24 oz.  
Ambassador  
Natural Casing  
Wieners



**5.49**

15 oz. Chub  
Select Varieties  
Stoneridge  
Summer  
Sausage



**10.99**

48 oz.  
Select Varieties  
Schweigert  
BreaDED  
Chicken



**7.99**

17-22 oz.  
Select Varieties  
Simek's  
Meatballs



**4.99**

28-32 oz.  
Select Varieties  
Bob Evans  
Side Dishes



**2/\$9**

8-12 oz.  
Select Varieties  
Taste Choice  
Shrimp



**8.99**

16 oz./21-25 ct.  
Our Family  
Cooked  
Tail-On Shrimp



**7.99** lb.

Frozen  
Northern Fisheries  
Haddock or  
Cod Loins

# SNACK TIME



**2/\$9**

6-10 oz.  
Select Varieties  
Cheetos, Fritos  
or Funyuns



**4.99**

11.5-20.5 oz. Select  
Nabisco  
Family Size  
Cookies or  
Crackers



**2/\$7**

5.75-13.7 oz. Select  
Cheez-It, Club,  
Toasted or  
Town House  
Crackers  
Excludes Family Size



**11.99**

40-52 ct.  
Kellogg's  
Rice Krispies Treats



**2/\$8**

10 ct.  
Select Regular Varieties  
CapriSun or  
Country Time Drinks



**4.49**

24 or 28 Pack  
Nestlé  
Pure Life Water



**2/\$6**

5-8 ct.  
Select Varieties  
Nature Valley, Fiber One or  
Cereal Treat Bars

## BAKE UP VALENTINE SWEET TREATS



**2/\$6**

16.5-18 oz.  
Select Varieties  
Betty Crocker  
Dessert Bar or  
Chunk Brownie Mix



**3/\$5**

12-16 oz.  
Select Varieties  
Betty Crocker  
Frosting



**4.49**

9-12 oz.  
Select Varieties  
Nestlé  
Toll House  
Baking Morsels



**5.49**

6.74-7.61 oz.  
Select Varieties  
Dove Promises  
Chocolate



9.3-16 oz., Select Varieties  
Betty Crocker Oreo  
or Reese's Cake or  
Brownie Mix . . . . .

**2/\$6**

### CLASSIC PEANUT BUTTER BLOSSOM COOKIES

Prep: 60 minutes • Cook: 60 minutes • Serves: 36

#### Ingredients:

- 1/2 cup granulated sugar
- 1/2 cup packed brown sugar
- 1/2 cup creamy peanut butter
- 1/2 cup butter, softened
- 1 egg
- 1 1/2 cups Gold Medal™ All Purpose Flour
- 3/4 teaspoon baking soda
- 1/2 teaspoon baking powder
- Additional granulated sugar
- About 36 Dove milk chocolate candies, unwrapped

#### Directions:

- Step 1**  
Heat oven to 375°F. In large bowl, beat 1/2 cup granulated sugar, the brown sugar, peanut butter, butter and egg with electric mixer on medium speed, or mix with spoon, until well blended. Stir in flour, baking soda and baking powder until dough forms.
- Step 2**  
Shape dough into 1-inch balls; roll in additional granulated sugar. On ungreased cookie sheets, place about 2 inches apart.
- Step 3**  
Bake 8 to 10 minutes or until edges are light golden brown. Immediately press 1 milk chocolate candy in center of each cookie. Remove from cookie sheets to cooling rack.

Source [www.bettycrocker.com](http://www.bettycrocker.com)

Our Family

HERE FOR YOURS



99¢

15 oz.  
Select Varieties  
**Our Family  
Variety Beans**  
Excludes Kidney  
& Chili Beans



2.29

16 oz.  
Select Varieties  
**Our Family  
Peanut Butter**



2/\$5

16 oz.  
Select Varieties  
**Our Family  
Salad Dressing**



2/\$4

8 oz.  
Select Varieties  
**Our Family  
Kettle Chips**



1.99

18 oz.  
Select Varieties  
**Our Family  
Barbecue Sauce**



2.99

32 oz. Whole or  
Hamburger Slices  
**Our Family  
Pickles**



3.99

42 oz.  
Select Varieties  
**Our Family  
Oats**



2/\$6

12 ct.  
Select Varieties  
**Our Family  
Toaster Pastries**



3/\$5

4 oz.  
Whole Button or Sliced  
**Our Family  
Mushrooms**



2.69

12 oz. Can, Packed in Water  
**Our Family  
Chunk Light  
Tuna**



1.19

14 oz.  
**Our Family  
Yellow Mustard**



Our Family

partners with local nonprofits  
to make our communities better places to live, play and grow.

Submit your nonprofit organization for sponsorship consideration.

LEARN MORE [WWW.OURFAMILYFOODS.COM](http://WWW.OURFAMILYFOODS.COM)



FINEST RESERVE



1.69

16 oz.  
Select Varieties  
**Finest Reserve  
Pasta**



4.99

24 oz.  
Select Varieties  
**Finest Reserve  
Pasta Sauce**



3.49

12 oz.  
Select Varieties  
**Finest Reserve  
Salad Dressing**



5.99

12 oz. Bag or  
12 ct. Pods  
Select Varieties  
**Finest Reserve  
Coffee**

# HOME & HEALTH



**7.49**



**7.49**



**8.49**



**13.99**



**3.19**



**1.59**



**2/\$6**



**3.49**



**2/\$5**



**12.99**



**7.99**



If you're not satisfied with the quality of any Our Family® brand product, simply return it to the store where purchased with your receipt, and we'll give you **DOUBLE YOUR MONEY BACK.**

**That's the Our Family® Quality Guarantee.**

# PET CARE



**18.99**



**10/\$10**



**29.99**



**4.49**

# GROCERY



**2/\$4**

18-19 oz.  
Select Varieties  
**Progresso Soup**  
Excludes Vegetable Classics



**2/\$6**

16 oz.  
**Kellogg's Zesta or  
Sunshine Krispy  
Saltine Crackers**



**4/\$5**

5.5-7.3 oz.  
Select Varieties  
**Kraft  
Mac & Cheese**



**2/\$6**

11.5 oz. Reese's Puffs,  
10.5 oz. Lucky Charms,  
10.4 oz. Cocoa Puffs, 9 oz. Multi-Grain  
Cheerios or 8.9 oz. Cheerios  
**General Mills Cereal**



**2/\$7**

24-32 oz., Select Varieties  
**Pearl Milling  
Company Syrup or  
Pancake & Waffle  
Mix**



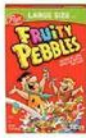
**2/\$5**

16-24 oz.  
Select Varieties  
**Ragú  
Pasta Sauce**



**4.29**

5 lb. Bag  
Select Varieties  
**Pillsbury  
Flour**



**2/\$7**

14-16 oz. Great Grains,  
15 oz. Pebbles or  
Honey Bunches of Oats,  
16 oz. Honeycomb  
**Post Cereal**

# DELI & BAKERY



**5.89**

16.9 oz.  
**St. Pierre  
Mini Brioche  
Slider Rolls**

**9.98** lb.

Select Varieties  
**Kretschmar  
Off The Bone  
Turkey**

**3.69** lb.

In Our Deli  
**Mrs. Gerry's  
Rice or Tapioca  
Pudding**

**4.79**

10 ct.  
Select Varieties  
**Bakery  
Gourmet  
Cookies**

**4.29**

8 oz.  
Select Varieties  
**Yucatan  
Guacamole**

**5.29** lb.

In Our Deli  
**Boneless  
Chicken  
Wings**

**3.89**

4 oz.  
Select Varieties  
**CrunchMaster  
Crackers**

It's as easy as 1, 2, 3 ...

For more details please visit [ourfamilyfoods.com/Direct-Your-Labels](http://ourfamilyfoods.com/Direct-Your-Labels)

**1**

Collect Our Family®  
UPC Barcodes

**2**

Turn the UPC Barcodes  
into your school or  
nonprofit organization

**3**

Your school or organization  
collects 5¢ for each  
UPC Barcode redeemed



# FARM FRESH PRODUCE



**2.99** lb.  
Fresh  
Red Seedless  
Grapes



**3/\$10**  
6 oz.  
Blackberries  
16 oz.  
Strawberries



**1.29** lb.  
Fresh  
Braeburn,  
Pink Lady or  
Cosmic Crisp Apples



**2/\$5**  
8 oz.  
Whole or Sliced  
Mini Bella  
Mushrooms



**2.99** lb.  
Bushel Boy  
Beefsteak  
Tomatoes

**1.29** lb.  
Fresh  
Sweet Yellow  
Onions or  
Sweet Potatoes



**1.29**  
16 oz.  
Our Family  
Baby Carrots



**2.99**  
5 lb. Our Family  
North Dakota  
Red or Yellow  
Potatoes



**3/\$4**  
2 Liter  
7-Up  
Products

24 Pack/12 oz. Cans  
Coke  
Products **11.99**

6 Pack/ 5 Liter or  
6 Pack/7.5 oz. Mini Cans  
Coke Products  
Dasani Water 6 Pack/ 5 Liter... **3/\$13**

16 oz., Select Varieties  
BodyArmor  
Drinks **5/\$5**

24 Pack/ 5 Liter  
Dasani  
Water **5.49**

59 oz., Select Varieties  
Gold Peak  
Tea **2/\$6**

8 Pack/12 oz. Cans  
Topo Chico  
Saborés **7.99**

3 Liter  
Bob's Box  
Wine **19.99**

750 ml  
Kentucky Walker  
Bourbon **25.49**

10 Pack/50 ml Bottles  
Rumple  
Minze **9.49**

750 ml  
Cupcake  
Moscato **7.49**

30 Pack/12 oz. Cans  
Busch or  
Busch Light **19.99**

12 Pack/12 oz.  
Corona or  
Modelo **15.99**

6 Pack/16 oz. Cans  
Budweiser, Bud Light, Coors,  
Coors Light or Busch Light **6.59**

4 Pack/12 oz. Cans  
Caribiss  
Cocktails **8.99**

12 Pack/12 oz. Cans  
Voodoo Ranger  
Variety Pack **15.99**



**3.69**  
20 oz. Loaf  
Sara Lee  
Butter Bread

30 oz. Loaf  
Sara Lee  
Artesano Bread **3.99**

18-20 oz., Select Varieties  
Thomas'  
Bagels **4.99**

16 oz., Select Varieties  
Thomas'  
Swirl Bread **4.19**

14-19.25 oz., Select Varieties  
Old Dutch Multipack  
or Variety Pack Chips **9.99**

15 oz., Select Varieties  
Old Dutch  
Triple Pack Box Chips **5.49**

10-13 oz., Select Varieties  
Old Dutch Restaurant  
Style Tortilla Chips **3/\$10**

16 oz., Select Varieties  
Old Dutch Restaurant  
Style Salsa **3/\$10**



**4.99**  
48 oz.  
Select Varieties  
Blue Bunny  
Ice Cream



**3.49**  
Half Gallon  
Prairie Farms  
Chocolate Milk

Half Gallon  
Prairie Farms  
Lactose Free Milk **4.89**

Half Gallon  
Prairie Farms  
Orange Juice **4.59**

24 oz.  
Prairie Farms  
Cottage Cheese **3.59**

24 oz.  
Prairie Farms  
Sour Cream **3.89**