

2550 Arthur • Gary, IN
Grant & 25th off of 80/94
Phone: 219-977-9910

Fresh County Market

Where you *always* get a good deal!

Sign up to
APP CARD
Fresh County
Market
Rewards

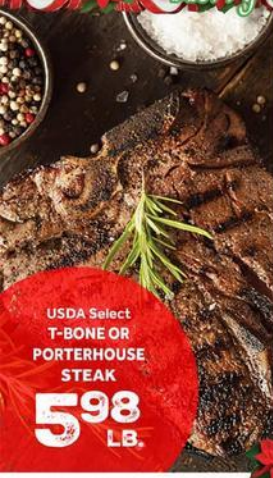
Buy*
Earn.
Redeem.

Save More
FOOD CENTER

921 Broadway
Gary, IN
Phone:
219-886-3089

SALE DATES: DECEMBER 18TH - DECEMBER 31ST 2024											
Wed.	Thurs.	Fri.	Sat.	Sun.	Mon.	Tues.	Wed.	Thurs.	Fri.	Sat.	Sun.
18	19	20	21	22	23	24	25	26	27	28	29
31											

Merry Christmas & Happy New Year!



USDA Select
T-BONE OR
PORTERHOUSE
STEAK
5.98
LB.

USDA
PRIME RIB
ROAST
7.98
LB.

\$4.98
LB.

USDA Choice
BONLESS CHUCK ROAST
OR STEAK

\$4.98
LB.

USDA
BEEF
RUMP ROAST



USGI
Cook's or
Jamestown
HAM
PORTION
\$1.98
LB.



USGI
WHOLE
TURKEY
BREAST
\$1.48
LB.



USGI
LAMB
SHOULDER
CHOPS
\$3.48
LB.



USGI
FRESH
SALMON
\$3.98
8 OZ.



5/8th
SNOW
CRAB LEGS
\$9.98
LB.



USGI
BONE-IN
PORK ROAST
\$1.48
LB.



USGI
PORK PICNIC
ROAST
\$1.48
LB.



USGI
PORK
BUTT ROAST
\$1.48
LB.



USGI
SMOKED
TURKEY PARTS
\$2.98
LB.



USGI
PIG FEET
PIG TAILS
OR SNOOTS
\$1.98
LB.



\$14.98
10 LB.
IBP
CHITTERLINGS



\$7.98
28 oz.
AUNT BESSIE'S
FULLY COOKED
CHITTERLING TUB



3/\$10
EA.
USGI
Butterball
CORNISH HENS



\$1.98
LB.
Grade A
Boneless
Skinless
CHICKEN BREAST



\$1.98
LB.
USGI
FRESH
CAPONS



98¢
LB.
FRESH
TENDER
GREENS



3 LB. BAG
YELLOW
ONIONS
98¢ EA.



48¢
LB.
SWEET
POTATOES



98¢ EA.
CELERY



88¢ EA.
GREEN PEPPERS



88¢ EA.
CUCUMBERS



2/88¢ EA.
GREEN ONIONS OR
CILANTRO BUNCH



88¢ LB.
ORANGES



88¢ LB.
RED OR GOLDEN
LOOSE APPLES



88¢ LB.
GRAPEFRUIT



68¢ EA.
AVOCADO



\$1.98 EA.
DOLE TENDER
SPINACH
8 oz.



\$1.98 EA.
10 LB. RUSSET
POTATOES



HOLIDAY DIGITAL DEAL of the WEEK



APRIL COUPON
Scan to Redeem
App Store
LIMIT 1
Per Fresh County Market Rewards
Account w/ \$25 Purchase
Must Clip Coupon to redeem at register
While Supplies Last. Expires 12/31/2024

Where You Always Get A Good Deal

Find Us On Facebook
Facebook/freshcountymarket

Get Connected!
www.freshcountymarket.com



Eckrich Virginia Honey Cured Ham

5.98
Lb.

Sara Lee Asst. Turkey Breast

5.98
Lb.



Bob Evans Roll Sausage Italian, Hot, Reg. Sage 16 oz.



Caronda Italian Meatballs or Ground Italian Sausage 16 oz.



El Popular Chorizo 12 oz.



Nature's Best Raw Shrimp EZ Peel 51-60 ct. 16 oz. Bag



Essential Everyday Summer Sausage 8 oz.



Moo & Oink Rib Tips 10 lb. Bag

Asst Deli Salad: Sea Food • Tuna • Chicken • Pasta

5.98
Lb.

Asst Deli Salad: • Colasalw • Macaroni • Potato

2.98
Lb.



Oscar Mayer Asst. Bacon 16 oz.



Eckrich Family Pack Smoked Sausage 39-42 oz.



Bar-S Bologna, Salsami or Turkey 16 oz.



Nature's Best Cooked Shrimp 31-40 ct. 16 oz. Bag



Nature's Best Raw Shrimp 16-20 ct. 2 lb. Bag



Nature's Best Snow Crab Leg 32 oz. Bag

Betty Crocker Cake Mix 13.25-14.25 oz. or Brownie Mix 16.3 oz.

2/3
For

Betty Crocker Ready to Spread Frosting 12-16 oz.

2/4
For



Bakers Baking Chocolate 4 oz.

2/4
For



Folger's or Dunkin' K-Cups Coffee 10-12ct



Folger's Ground Coffee 20.6-30.5 Oz.

8.98
Ea.

Jet Puffed Marshmallows or Creme 7 oz

2/3
For

Jell-O Pudding or Gelatin Mix 0.3-3.9oz.

2/3
For



Essential Everyday Vegetable Oil 40 oz

2/6
For



Ocean Spray Cranberry Sauce 14 oz



Princella Yams 29 oz.

2/5
For

Creamette or Prince Lasagna 16 oz.

2/4
For

Prego Pasta Sauce 45 oz. Alfredo Sauce 22 oz.

2/7
For



Essential Everyday Flour 5 lb.

2/5
For



McCormick Brown Gravy 0.87 oz.

88¢
Ea.

Heinz Homestyle Gravy 12 oz.

2/5
For

Kraft Miracle Whip 19-30 oz.

4.98
Ea.

StoveTop Stuffing Mix 6 oz.

2/4
For



Essential Everyday Black Eye Peas 16 oz.

2/3
For



Ritz, Town House, Club & Nabisco Snack Crackers 8-14 oz.

2/5
For

Hefty Plates or Bowls 20-45 ct.

2/5
For



Kraft Velveeta Cheese Loaf 32 oz.

6.98
Ea.



Pillsbury Crescent Rolls 8 oz. Sweet Rolls 12.4-13.9 oz.

2/5
For



Pillsbury Grands Biscuits 16.3 oz.

2/5
For



Pillsbury Cookie Dough 16-16.5 oz.

2/6
For



Pillsbury Refrigerated Pie Crust 2 ct.

2/7
For

Prairie Farms Buttermilk 1/2 Gallon

2.48
Ea.

Prairie Farms Sour Cream 16 Oz.

1.78
Ea.

Prairie Farms Egg Nog Quart.

2.98
Ea.

Essential Everyday Butter Quarters 16 oz.

2/6
For

Kraft Philadelphia Cream Cheese Chunk 8 oz.

2/4
For

Essential Everyday Whipping Cream 16 oz.

3.98
Ea.

Deans Dips 16 Oz.

2/4
For

Daisy Sour Cream 24 Oz. ReddWip 6.5 Oz.

2/5
For

Coffee Mate Flavored Ass. Coffee Creamers 32 Oz.

2/7
For

Tropicana Orange Juice 46 Oz.

2/7
For

Doritos Doritos 6-10 oz.

2.98
Ea.

Lays Potato Chips 4-8oz.

2.98
Ea.

Utz Original Utz or Vitner's Potato Chips 7-8 oz.

2/5
For

Lipton Tea 12 pk. .5 lt. Bottles

2/12
For

Aunt Millie's Deluxe White or 100% Whole Wheat 22 oz.

2/5
For

Aunt Millie's Hawaiian Rolls 12 ct.

2/7
For

Marie Callender's Fruit or Cream Pies 24.5-42 oz.

5.98
Ea.

Pepsi, Coke or 7-Up Products 12 pk. cans

2/12
For

Pepsi, Coke or 7-Up Products 8 pk. - 12 oz. Bottles

2/12
For

Pepsi, Coke or 7-Up Products 10 pk./mini cans

2/12
For

Pepsi, Coke or 7-Up Products 6 pk. 16.9 Oz. Bottles

2/10
For

Nature's Own Honey Wheat Dinner Rolls 12 ct.

2/5
For

Bakery Fresh Fruit Pies (Pecan \$6.98)

4.98
Ea.

Sweet Connection Large Bakery Cakes

26.98
Ea.