

STOCK YOUR FREEZER WITH OUR MEAT VALUE PACKS

PACK #1: 11 LB. AVG

\$42.00

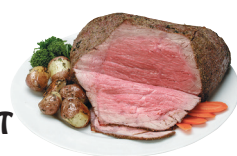
- 2 LBS. 80% GROUND BEEF
- 1 LB. HOFMANN GERMAN FRANKS
- 1 LB. LINK ITALIAN SAUSAGE - HOT OR SWEET
- 3 LBS. BONELESS BEEF CHUCK ROAST
- 3 LBS. PORK STEAK
- 1 LB. SLAB BACON



PACK #2: 13 LB. AVG

\$50.00

- 3 LBS. BONELESS BEEF CHUCK ROAST
- 3 LBS. 85% GROUND CHUCK
- 3 LBS. CHICKEN LEG QUARTERS
- 2 LBS. ITALIAN SAUSAGE - HOT OR SWEET
- 2 LBS. STEW BEEF



PACK #3: 15 LB. AVG

\$55.00

- 3 LBS. 80% GROUND BEEF
- 3 LBS. LINK ITALIAN SAUSAGE
- 4 LBS. BONELESS BEEF CHUCK ROAST
- 2 LBS. STEW BEEF
- 3 LBS. CHICKEN LEG QUARTERS



PACK #4: 18 LB. AVG

\$65.00

- 2 LBS. STEW BEEF
- 3 LBS. 80% GROUND BEEF
- 3 LBS. LINK ITALIAN SAUSAGE
- 5 LBS. BONELESS BEEF CHUCK ROAST
- 2 LBS. HOFMANN GERMAN FRANKS
- 3 LBS. CHICKEN LEG QUARTERS



PACK #5: 18 LB. AVG

\$78.00

- 4 LBS. 85% GROUND CHUCK
- 4 LBS. CENTER CUT PORK CHOPS
- 3 LBS. RIBEYE DELMONICO STEAK
- 4 LBS. BONELESS BEEF CHUCK ROAST
- 3 LBS. CHICKEN LEG QUARTERS



PACK #6: 20 LB. AVG

\$80.00

- 3 LBS. 80% GROUND BEEF
- 3 LBS. ROLLED BEEF SHOULDER ROAST
- 3 LBS. BONELESS N.Y. STRIP STEAK
- 2 LBS. LINK ITALIAN SAUSAGE
- 3 LBS. BONELESS PORK ROAST
- 3 LBS. PORK STEAK
- 3 LBS. BONE IN CHICKEN BREAST



PACK #7: 26 LB. AVG

\$100.00

- 4 LBS. 80% GROUND BEEF
- 3 LBS. CUT UP CHICKEN
- 4 LBS. PORK STEAK
- 4 LBS. BONELESS PORK ROAST
- 2 LBS. STEW BEEF
- 4 LBS. BONELESS BEEF CHUCK ROAST
- 2 LBS. ITALIAN SAUSAGE - HOT OR SWEET
- 3 LBS. BONELESS N.Y. STRIP STEAK



PACK #8: 25 LB. AVG

\$108.00

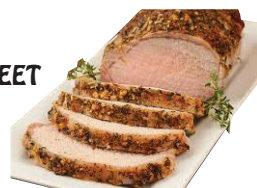
- 5 LBS. 85% GROUND CHUCK
- 5 LBS. CENTER CUT PORK CHOPS
- 5 LBS. BONELESS N.Y. STRIP STEAK
- 5 LBS. BONELESS BEEF CHUCK ROAST
- 5 LBS. CHICKEN LEG QUARTERS



PACK #9: 34 LB. AVG

\$110.00

- 5 LBS. 85% GROUND CHUCK
- 4 LBS. CENTER CUT PORK CHOPS
- 4 LBS. BONELESS BEEF CHUCK ROAST
- 4 LBS. LINK ITALIAN SAUSAGE - HOT OR SWEET
- 5 LBS. CHICKEN LEG QUARTERS
- 2 LBS. STEW BEEF
- 4 LBS. BONELESS PORK ROAST
- 6 LBS. CUT UP CHICKEN



PACK #10: 32 LB. AVG

\$119.00

- 5 LBS. 85% GROUND CHUCK
- 4 LBS. PORK STEAK
- 3 LBS. BONE IN CHICKEN BREAST
- 3 LBS. ITALIAN SAUSAGE - HOT OR SWEET
- 4 LBS. BONELESS SIRLOIN STEAK
- 4 LBS. BONELESS BEEF CHUCK ROAST
- 5 LBS. CENTER CUT PORK CHOPS
- 2 LBS. STEW BEEF
- 2 LBS. HOFMANN GERMAN FRANKS



PACK #11: 42 LB. AVG

\$140.00

- 5 LBS. 85% GROUND CHUCK
- 5 LBS. CENTER CUT PORK CHOPS
- 5 LBS. BONELESS BEEF CHUCK ROAST
- 5 LBS. LINK ITALIAN SAUSAGE - HOT OR SWEET
- 5 LBS. BONELESS SIRLOIN STEAK
- 5 LBS. CHICKEN LEG QUARTERS
- 2 LBS. STEW BEEF
- 4 LBS. BONELESS PORK ROAST
- 6 LBS. CUT UP CHICKEN



PACK #12: 55 LB. AVG

\$200.00

- 10 LBS. 85% GROUND CHUCK
- 4 LBS. BONELESS BEEF CHUCK STEAK
- 5 LBS. PORK STEAK
- 4 LBS. BONELESS N.Y. STRIP STEAK
- 5 LBS. BONELESS BEEF CHUCK ROAST
- 4 LBS. CENTER CUT PORK CHOPS
- 4 LBS. HOFMANN GERMAN FRANKS
- 4 LBS. BONELESS HAM
- 5 LBS. LINK ITALIAN SAUSAGE - HOT OR SWEET
- 3 LBS. COUNTRY STYLE SPARE RIBS
- 5 LBS. CHICKEN LEG QUARTERS
- 2 LBS. SLAB BACON

